



Model 915 PalmRAD II

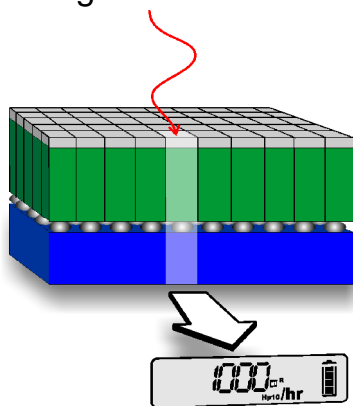
Meeting Your Radiation Safety Needs

Key features of the Model 915 PalmRAD II:

- Small and lightweight handheld design, fits in your pocket
- Easy to read LCD display with integrated backlight
- Robust, dustproof and water resistant
- Wide dynamic range
- Fully configurable alarms
- Data logging via PC Software
- Utilises D3 Sensor Technology

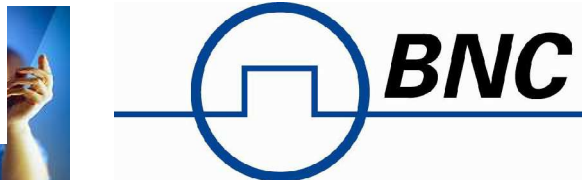


Direct Dose Detection (D3) allows for innovative, new, small and lightweight personal dosimeter devices for use in all first responder and investigative environments.



Specification summary for Model 915 PalmRAD II:

- Detection capability
X-ray and Gamma
- Measurement types
Air kerma or H*10
- Measurement range
100 urem/h to 300 rem/h
- Energy range
50 keV to 1.5 MeV
- Data logging
5000 data logging points – dose, dose rate, alarm and event information.



Model 915 PalmRAD II Survey Meter

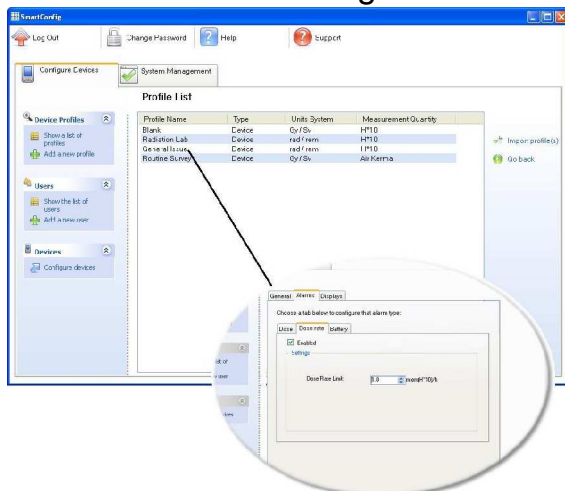
Specification:

- Accuracy
±15% from 100 urem/h to 300 rem/h
- Energy response
±30% wrt Cs-137 reference
- Angular response
±20% over the range ±90° (Cs-137)
- Response time
<10s for dose rates < 1 rem/h
<2s for dose rates >= 1 rem/h
- Size & Weight
5.2 x 3.0 x 1.4 inches < 7 oz
- Battery life
Up to 20 hours operation from a full charge of the internal battery.
Temperature range
14° to 104° F
- Protection rating
Dustproof and water resistant - IP65

Available accessories:

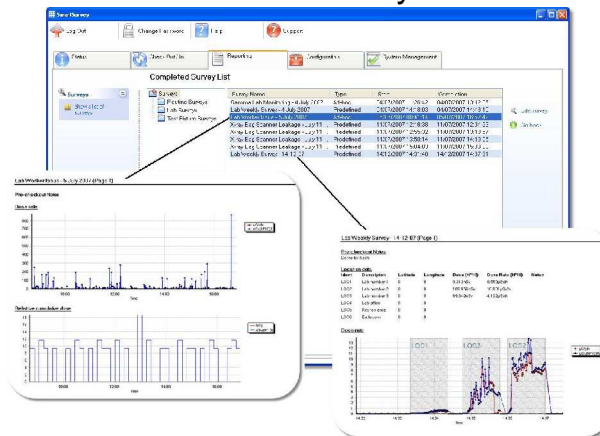
- Desktop charging station
- Universal power supply
- Lanyard
- Bluetooth transceiver
- Application Software
 - SmartConfig for device configuration
 - or
 - SmartSurvey for device management, survey execution and report generation
- 5 way charging station
- Belt holster

SmartConfig



Alarm / dosimeter configuration from stored profiles

SmartSurvey



Automated survey generation & reporting